

OUR PLACE WYE

There's been much talk over the past few years about wellbeing and preventive health. Both Lord Darzi's 2024 report into the NHS and Health Secretary Wes Streeting have stressed that if we can keep ourselves physically and mentally active - and socially engaged - then this will take pressure off our GPs and hospitals.

In Wye we are blessed with many possible clubs and societies, and some of them will be displaying their wares at the Wye Community Fair on Sunday September 7 between 2 and 5 pm. This event has been specially designed to entice Wye residents away from their armchairs, and yes, hopefully help with their health and wellbeing. At least 20 of our local clubs and societies have taken stalls.

Even if you feel too young and athletic to join some of the groups or indeed too old and decrepit to join others, you may still pause to reflect on what it is that makes for a healthy and vibrant society. Community groups and clubs such as these are surely part of the answer? Please support them in whatever way you can.

Jasper - Chair, Our Place Wye



WHAT'S INSIDE

2- Virtual Lunch with renowned artist Peter Kuhfeld
4- Can we get Gen Z to more live events?
6- Clubs and Societies double page special ahead of the Community Fair
8- History of Ripple Farm Organics
Send your articles to newsletter@ourplacewye.org.uk

VIRTUAL LUNCH

Peter Kuhfeld

Our Place Wye meets the renowned English figurative painter and Wye resident - famous for his royal portraits.

Please tell us a bit about yourself and how you came to live in Wye.

My wife Cathryn and I are both painters, and started out living in a flat in Shepherd's Bush having met when we were students at The Royal Academy in London. We outgrew the flat, and with two growing daughters, we needed to perhaps move out from London.

It took over a year of looking but we eventually found a house in Kent in the village of Wye. This provided us with much needed studios and a garden, and most importantly was walking distance to a Primary School, Lady Joanna. It was also very close to the railway station, as I was working on commissions in London.

I didn't drive in those days (much to my wife's annoyance), and she said she was not going to be a taxi service. Wye was a wonderful find and we have been here now for 38 years.

You have had a very successful career- what first sparked your interest in painting?

I was given a cardboard box of oil paints when I was 7 or 8 years old. I loved the smell of the oils but had not a clue how to use them! However I wasn't put off as oil paints are my preferred medium.



Above: a recent photo of Peter in his studio

What is your proudest achievement?

To have kept going. After all these years I am still working and learning at what I love.

What advice would you give to young or aspiring artists, especially those in smaller communities like Wye?

To be surrounded by our beautiful countryside is a huge excitement for me as a painter. I have worked a lot in the landscape and still do. My advice would be to work hard, look carefully and consistently at the world around you. Never give up.

Are there any local landscapes, people or moments that have inspired your recent work?

Currently I am working on landscapes over near Canterbury of sun drenched and ripening cornfields.

If you could paint any figure alive or dead who would it be and why?

Painting anybody is always exciting, an adventure and of course a challenge. One of my first commissions was from the late Queen to draw Lord Menuhin for the Order of Merit. He was such a marvellous and sensitive man. It was a great privilege.

I painted the King when he was Prince of Wales, and most recently when he asked me to paint the Coronation State Portrait, which is now on permanent view at Buckingham Palace. When I attended its unveiling by the King and Queen at the National Gallery, a young woman in attendance came up to me and told me that I had painted her portrait when she was 10 years old!

What are you having for lunch today?

A tuna and egg sandwich!

What is the secret to a happy and fulfilled life?

For me it is my beautiful wife, Cathryn, our two lovely daughters and our simply divine grandchildren. To be surrounded by all of these you cannot but be really happy.



Above: The unveiling of the Coronation State Portraits at the National Gallery London back in June

Below: Peter's painting titled 'James Galway roses, after a rain shower in Wye - August'



SOUND THE ALARM: IS YOURS STILL IN DATE?

Karen Jeal, Kent Fire and Rescue Service

Check your smoke alarms are in date!

Kent Fire and Rescue Service (KFRS) is urging people to check the expiry date on their smoke alarms, as they only have a lifespan of up to ten years.

Between 2022-2024, approximately 6,600 expired smoke alarms were discovered at properties in Kent and Medway during Home Fire Safety Visits carried out by KFRS, with some residents unaware that they expire or how to check them.

The service has now launched its own campaign to raise awareness that smoke alarms expire, how to check their date and how to replace them. Having an in-date smoke alarm is important in helping

keep homes safe, as once they expire the sensors in the alarms become less reliable. This means that they might fail to sound in an emergency or could go off for no reason and could impact how effectively they work if there was a fire.

Rachael Spencer, Safe and Well Manager at KFRS, said: "Whilst many residents in Kent are great at checking their smoke alarms work, which we recommend testing once a week, we found an increase in the amount of expired smoke alarms on our checks as people don't realise, they have an expiry date.

Making sure your smoke alarm is in-date is so simple to do and provides an extra level of safety in your home that could make a real difference in case there is ever a fire."

The expiry dates for smoke alarms, whether battery-powered or wired-in,



should be on the back or side. To check it, you might need to remove the alarm from the ceiling. If there's no expiry date, it means you'll need to replace the alarm and even if the smoke alarm still sounds, if it has expired then it needs replacing as soon as possible.

You can call 0800 923 7000 for advice and to book a free Home Fire Safety Visit. For more information visit:

<http://www.kent.fire-uk.org/smoke-alarms-10-year-lifespan>

ONE WINDOW, MANY STORIES - WILL YOURS BE ONE?

I am sure you will have all walked past Number Nine Church Street and admired one of the displays in the window. There have been various art displays, a letter box display, a hat display from the school, and diaries of a first world war officer. Gill who facilitates the window explained 'we would like more displays that are of local interest, such as the schools, local businesses or groups'.

If you are interested please email: gill.powell@sjpp.co.uk for more details



Above: Number 9's Advent window in 2021

NEW BUG HOTEL NEEDS A NAME:

Teresa Bennett

Thank you so much to the group of fabulous volunteers who came to help us construct the new Bug Hotel at Wye Church. We had a great morning of construction and managed to clear away the old Bug Hotel and complete the new build, notwithstanding the heavy rain showers! We would also like to say a massive thank you to everyone who kindly dropped off materials for us to use. We combined the new materials with much of the old in order to best make use of the resources and allow the bugs who had already set up camp in the old hotel to easily transfer to the new. We are going to use any leftover materials to create a Bug Hotel in Brook Church so all materials will be put to good use.

The project was a big success, and the new Bug Hotel looks much better, and



Above: Can you think of a name for the new bug hotel?

hopefully will give even more insects in the churchyard somewhere to call home! We have put some soil on the top of the bug hotel and would love to be able to plant some succulents there, so if you have any that you would be happy to share then please do feel free to add them to the Bug Hotel.

The Bug Hotel also needs a name, and we were wondering if anyone had any good suggestions – please email sarahwildgoose@gmail.com with your suggestions.

RECONNECTING LIVE MUSIC WITH THE NEXT

GENERATION:

A recent survey conducted by GWI (a consumer research company) showed that Gen Z are less interested in live music than they were six years ago before the pandemic began. The Coachworks' manager Lucy explains how to run a vibrant multi-use venue while bringing live music and events to Ashford and why it is so important to support your local venues!

Putting on events isn't always straightforward. We deal with tight budgets, rising costs, tricky licensing processes, and, of course, the ever-unpredictable British weather – which isn't ideal when you're running outdoor spaces. Since Covid, a lot of people are still getting used to going out again, and encouraging consistent turnout is something we're always working on. Without big-city funding behind us, we rely on local talent, word-of-mouth, and the sheer dedication of a small but passionate team. Even so, we believe in what we're doing, because when the



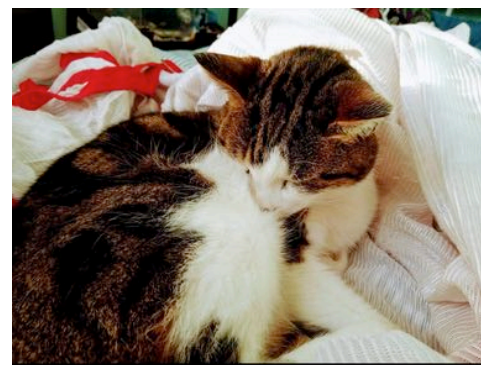
Above: Oasizband bringing the 90s back to Ashford In May

community gets behind it, it really does work. Every time you come to an event, grab food from a trader, or even just share a post online, you're doing more than having a good time. You're helping build something that matters. Local gigs mean work for musicians, sound crews, event staff, food vendors, and security teams. The more people show up, the easier it is to keep independent spaces like Coachworks open. A buzzing event scene brings pride to the town, opens doors for young talent, and gives people real reasons to stick around or visit Ashford.

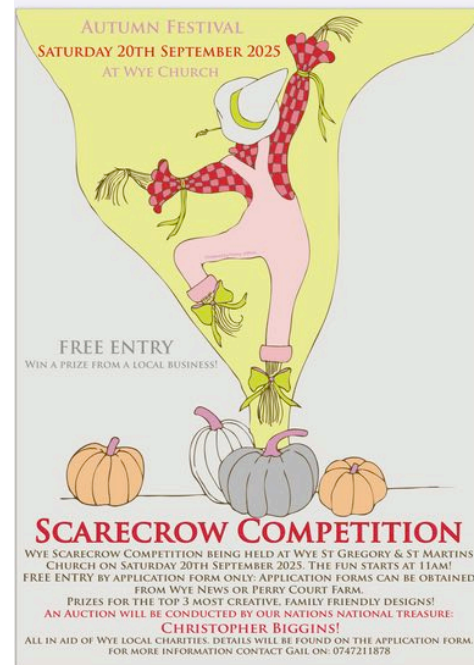
Coachworks isn't just a venue. It's a space for the community. With your support, we're set on making Ashford a town known for creativity, connection, and great times.

Coachworks is open every day to eat, drink or attend one of the many events they have going on throughout the year or even hire for your own party/occasion. For further information please visit: www.coachworks.co.uk

RALPH LEAVES A LEGACY OF LOVE



Ralph lived for 19 years on Bridge Street and was adored by all the children on the school run who gave him plenty of attention. Villagers walking by either stopped to chat or stroke Ralph and he seemed to capture everyone's heart. We will miss seeing him wandering into the village hall or sitting watching the world go by. He was much loved and will be fondly remembered.



We are grateful for the support of the following local business sponsors: Canterbury Cider, Meade Home Improvement, Garden of England Classics Wedding Car Hire, New Flying Horse, Sawyers, Sealey Cleaning, Spacemaker Architects, Ticketyboo, Ticked Trout, Rebel Farmer, Musika, Wye Beauty, Wye Farmers' Market, The Hub, Hobbs Parker, Wilder-Work, The Vault Hair and Beauty, Embrace Yoga With Me, Genesis Landscaping, Wye Coffee Shop, and The Bowl Inn Hastingleigh.

If you would like to become a sponsor please contact admin@ourplacewye.org.uk

Thanks to Our Place Wye funders:



EVENTS AND LISTINGS

Find out what's happening in Wye and surrounding areas over the coming months.

SEPTEMBER - DECEMBER

- Tuesday 2nd Sept - Carers' support group, Brambles Care Home 11 am
- Saturday 6th Sept - Friends of Wye Church Coffee Morning - 9am- 12pm
- Saturday 6th Sept - Wye Surgery health event - 9am
- Sunday 7th Sept - Our Place Wye Community Fair Wye Village Hall, 2 - 5pm
- Saturday 13th Sept Ride and Stride - county wide event for all churches
- Sun 14th Sept - Handcraft Community at Wye Village Hall
- Saturday 20th September - Scarecrow Festival , Wye Church
- Tuesday 7th Oct - Carers' support group, Brambles Care Home, 11am
- Saturday 4th and Sunday 5th Oct - Perry Court Apple Fayre, all weekend.
- Sunday 2nd Nov - Remembering Service at Wye Church, all welcome - 10 am (to remember those who have died in the last 3 years , however all welcome)
- Tuesday 4th Nov - Carers' support group, Brambles Care Home, 11am
- Sunday 9th Nov - Remembrance Sunday Service at 10am at Wye Church
- Saturday 8th/Sunday 9th Nov - Perry Court Festive Fayre
- Saturday 22nd Nov - Ashford Choral Society Concert
- Friday 5th Dec- Wye Street Party - 6-8 pm Church Street, Wye

GREEN DOCTORS EVENT

Weds Sept 24th September 1.30pm at Wye Large Village Hall.
This is a free session open to everyone who wants to hear advice on heating costs and how to reduce them for the winter months. This will take place straight after the community lunch.

- **Wye Farmers' Market** will take place as usual on the first and third Saturdays of the month.
- The **Options Club** meet in Wye Church every Monday 10 am - 12pm for board games, chat and coffee.
- Wye Community Choir meets every Tuesday, 7.30 pm in the small village hall.

EVENTS AT LUCKLEY HOUSE

Little Chequers, Wye, TN25 5DY
Open to all Wye Residents:

Monday - 2-4pm - Knit and Natter
Tuesday - 2-4pm - Darts and Board Games Group
Wednesday - 10-11am - Coffee Morning
Wednesday - 7-9pm - Bingo
Thursday - 8:30 am - Breakfast Club
Sunday 10-11 am - Coffee Morning
Please contact Luckley House directly or drop in for further information



There will be a pink bin at every Farmers' Market going forward, giving everyone a chance to recycle any electrical and electronic equipment.

OUR PLACE WYE COMMUNITY LUNCH

Wye Village Hall, £5 for two courses, tea, coffee and biscuits.
12:15 for 12:30 serving. To book message: 07395433939 or email admin@ourplacewye.org.uk

Open to all Wye Residents:

10th and 24th September, 8th and 22nd October
5th and 19th November, 3rd and 17th December
(Christmas lunch on 17th).

If you have any upcoming events or articles you wish to be added to our next Newsletter please email: admin@ourplacewye.org.uk

BUS TIMETABLE:

WYE, LITTLE BURTON, ASHFORD

Mondays to Fridays except public holidays

Wye Church	1040	1140	1240	1340
Little Burton Clarke Crescent	1048	1148	1248	1348
Sainsbury's Bybrook Retail Park	1056	1156	1256	1356
Ashford Park Street	1104	1204	1304	1404

ASHFORD, LITTLE BURTON, WYE

Ashford Park Street <i>Stop C</i>	1014	1114	1214	1314
Sainsbury's Bybrook Retail Park	1022	1122	1222	1322
Little Burton Clarke Crescent	1030	1130	1230	1330
Wye Church	1038	1138	1238	1338

WYE CLUBS AND SOCIETIES DOUBLE PAGE SPECIAL:

GET INVOLVED, STAY CONNECTED:

DISCOVER VOLUNTEERING AND CLUBS IN OUR VILLAGE

BROOK MUSEUM; HOW YOU CAN MAKE A DIFFERENCE

Helen Ougham

I'm always learning something new at Brook Museum and I love meeting visitors, some from very far away, and working with staff and other volunteers. Much of the Museum's collection was previously owned by Wye College, and I think it's important to preserve that part of our village heritage.

We are always looking for new volunteers to help open the museum during the summer open weekends. Volunteer benefits include FREE attendance at all museum events and activities, regular catchups and celebrations, the opportunity to develop new and existing skills and the chance to meet like-minded people with a

passion for local and rural heritage. If interested, please email us at: enquiries@brookruralmuseum.org.uk

From September onwards, we'll be training Bee-Keeping Volunteers to help set up and look after a new beehive at the Museum. If interested, please contact us at:

conservation@brookruralmuseum.org.uk



Above: Volunteers taking a well earned break! The museum sheds fascinating light on what rural life in Kent was like many years ago.

WYE MUSIC SESSIONS

Jackie Ashford

The Wye Music Session was set up to provide a venue for musicians to socialise and play music together. It has been hosted by band mates Jackie, John and John for around seven years.

"We try to make the session an inclusive village event where anyone can feel confident to join in or take the lead."

A range of people attend including musicians from beginners upwards to people who just enjoy listening, foot-tapping and singing the chorus.

"We play an eclectic mix of music including folk, folk punk, English, Irish and Scottish trad, Americana, blues and



Above: The Music Session in full swing jazz; we've even had a rendition of Postman Pat!". All instruments are welcome, although space is limited. (John's double bass doesn't fit in the bar too well!)

Wye Music Session runs every third Sunday of the month from 2:00pm until 6:00pm at Sawyers. (Big thank you to them)

WYE NATIONAL NATURE RESERVE

Piers Griffin

Natural England manage the Wye National Nature Reserve, just a few miles from the village of Wye. It is 150 hectares of chalk grassland and woodland. It also has the iconic Devil's Kneading Trough within it. The nature reserve is special for many things, including the Orchids, Butterflies and Moths.

I started my career in nature conservation volunteering and found it extremely rewarding. Firstly, it was because of the physical aspect, getting outdoors, in the fresh air and meeting like-minded people. Secondly, because it is a worthy cause, helping places become better for nature. The current volunteers all enjoy the experience for many of the same reasons.

We are looking for volunteers to join our weekly task group. But also, we are looking to recruit people who are interested in doing species surveys, particularly bird surveys. We are also looking for someone to do the bin collection and litter picking at the car parks. There is no need for any experience for the practical task groups, and plenty of training and guidance is given.

If you are interested in volunteering please email:
Piers.Griffin@naturalengland.org.uk



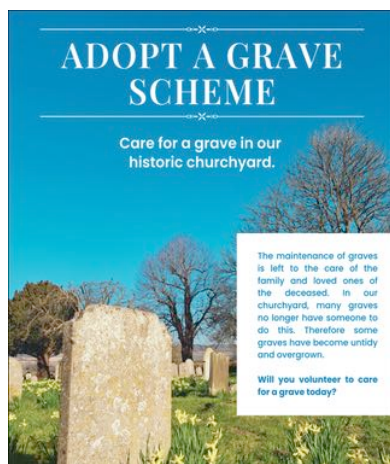
Above: Volunteers in the Kneading Trough

JOIN HANDS ACROSS GENERATIONS: ADOPT A GRAVE TODAY

Sue Puckey, Wye Benefice Administrator

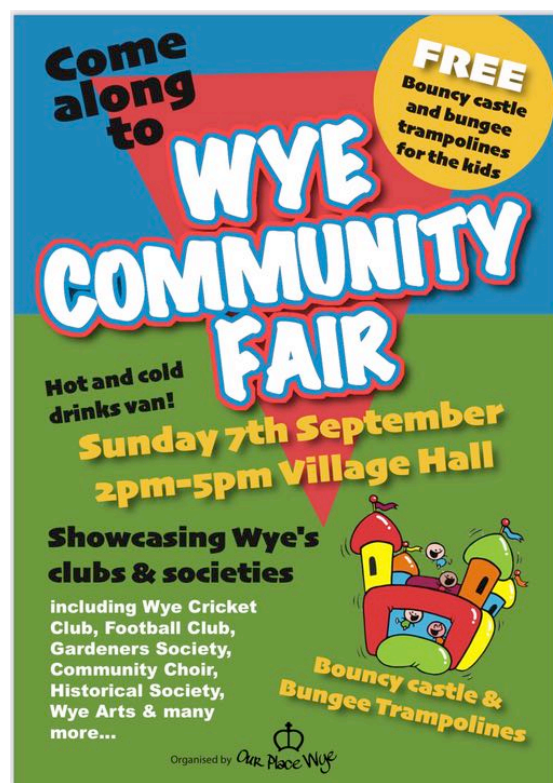
Our new volunteer scheme Adopt A Grave launched in May. We identified a number of graves in need of some care and attention with no family remaining to look after them. This is a different way to get involved in your community. Working in the fresh air is great for mind, body and soul and you not need to be a church member to get involved. Perhaps you might even try to research the name on the grave and see what you can find out about them.

There is no set amount of time to do this—sign up and start whenever you like for as long as you like. Local resident Pat told us about her experience: 'My family vault is in Hertfordshire, some distance from Wye.



When I saw the invitation to adopt a grave in the village which has been my home for more than five years now, I remembered that saying: If you can't be with the one you love, love the one you're with. What better way of creating a connection with my new home than by taking care of the grave of one of Wye's former residents?'

If this sounds like something you could be interested in: tel: 01233 813793 or email office@wyebenefice.org.uk



Thank you to all the volunteers delivering this newsletter. Without them you would not be reading it!

WYE ARTS

Sally Barton, Committee member

I joined Wye Arts as a committee member and get a lot out of contributing to its activities; my particular role on the committee, as well as working with the team to manage its programme of events, is to produce the publicity posters and also to run the monthly art sessions along with a fellow committee member. The art sessions - which are 'art socials' rather than taught sessions - are very enjoyable and have proved popular.

We're always keen to attract new committee members as there's plenty of work to go round, and this is made more enjoyable the more members we have to share it. No previous experience required!

We have a varied programme of events, taking in all areas of what can loosely be described as 'the arts', and put a lot of work into finding events/talks that will interest our membership.

If you are interested either in joining Wye Arts as a member or to volunteer for the committee, please email: wyeararts@gmail.com



Above: A selection of posters for recent WA events. The programme of events for this year can be seen on the noticeboard outside Wye News.

WYE SURGERY PATIENT GROUP

Eileen Burton

The group meets four times a year with the Practice Manager and a GP usually present, to discuss surgery news and issues. It is a good opportunity for open dialogue between the surgery and patients. We have organised an event, at Wye Surgery on Saturday 6th September from 9am, to help raise awareness of both men's and women's health issues.

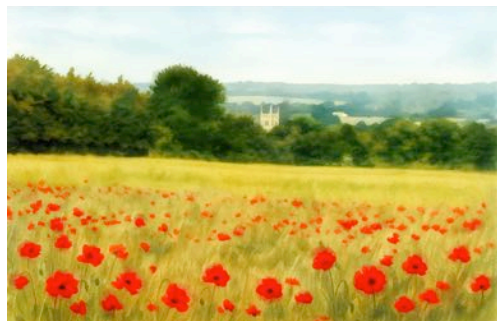
Our meetings are open to all Wye Surgery Patients and we would love more people to attend. If you are interested in finding out more please contact:

wyesurgerypppg@gmail.com



COMMUNITY CORNER

Capturing local sights, special moments and the charm of our village in pictures from the Our Place Wye Facebook Page



Above: Steve Bloom shared with us his painting of the view of the church as seen from behind Ripple Farm while the poppies were in bloom.



Left: Well done to Canterbury Cider for winning Silver in the Sandford Orchards cider awards!



Above: Cricket match in full swing at Wye Cricket Club.



Above: Well done to Kent Wild Flower Seeds whose exhibit 'Wildflowers Without Borders' was awarded a gold medal at RHS Chelsea Flower Show

If you want to share a well done or a special picture please email us at admin@ourplacewye.org.uk

WHAT MAKES WYE WYE - RIPPLE FARM ORGANICS

Sarah Mackey
Owner

Our Home Farm is a small organic, horticultural farm of 14 acres situated in the Stour Valley near Crundale. As well as our Home Farm, we also rent a Victorian Walled Garden at Olantigh near Wye and fields covering 100 acres below Wye Crown (formerly part of the Wye College Farm).

Ripple Farm has been certified Organic since 1989 and is certified organic by the Soil Association. The farm itself is essentially a market garden producing a wide range of organically grown vegetables, salad crops, herbs and a small amount of fruit. With this produce, Ripple Farm Organics runs an East Kent vegetable box scheme; sells at Wye and Whitstable Farmers' Markets here in Kent and Stoke Newington Farmers' Market in London; and supplies specialist organic/wholefood shops, and other box schemes in London and Kent.



Above: Leek Harvesting

Our Ethos is:

- sustainable growing methods in harmony with nature, producing fresh, nutritious, organically grown food
- Providing a direct link from consumers to growers
- Reducing food miles; re-using and reducing packaging
- Providing sustainable, local employment

The farm is run by Martin and Sarah Mackey. Martin first started working at Ripple Farm in 1993 whilst studying sustainable agriculture at Wye College, whilst Sarah discovered her interest in organic vegetable growing whilst volunteering at organic farms around Europe and joined Ripple in 2000. There are between 10 and 15 other employees working at the farm through the year, many of whom have worked there over 10 years.

Martin is also a committee member for Wye Farmer' Market, who provide and put up the market tents for the annual street party and other village events. We have many loyal customers in Wye and frequently receive positive feedback from people walking on the public footpaths through and next to our fields about what they can see growing and the wildlife, wildflowers and hedges. Thanks to all that support us.

Ripple Farm Organics
Crundale, Canterbury, CT4 7EB
01227 730898
or
www.ripplefarmorganics.co.uk



Above: Workers getting the machine and plants ready for lettuce transplanting