

SUMMER 2026

OUR PLACE WYE



Photo credit: Steve Bloom

WHAT'S INSIDE

2 - Virtual Lunch with Lady J Deputy Head Kristen Weiss

4 - Crash Festival returns for a second year

6 - Wye Cricket Club, a new season

7 - A Cuppa With.. Photographer Steve Bloom

8 - What Makes Wye Wye: St Gregory and St Martin Church

Send your articles to admin@ourplacewye.org.uk

VIRTUAL LUNCH

Kristen Weiss, Lady Joanna Thornhill Primary School

Please introduce yourself

My name is Kristen Weiss and I'm one of the Deputy Headteachers at Lady Joanna Thornhill Primary School. I joined the team in 2022 and have really loved being part of the school's journey, helping it grow and develop over the past four years. Over the last year and a half, I've also taken on the role of SENCO (Special Educational Needs Coordinator), where I champion our children with additional needs and work closely with staff to make sure our school is as inclusive and supportive as it can be.

What does a typical day at school for you look like?

No two days are ever quite the same in my role and that's exactly what makes it so rewarding! A typical day might involve meeting with parents and teachers to talk through how best to support individual children, as well as spending time in classrooms observing, learning and checking in with pupils to hear how they're getting on. There are often reports to write and meetings with external professionals such as Speech and Language Therapists, Educational Psychologists and Occupational Therapists. Alongside this, I enjoy teaching, coaching staff, attending training and keeping up to date with new ideas and approaches. And sometimes, you might even find me spending a quiet moment with a child and our guinea pigs – as they can be wonderfully calming companions! Every day brings something different, with the focus always on the child.



Have you seen changes in how Special Educational Needs (SEN) is approached in recent years?

You often hear about changes to SEN in the news, but some things remain the same: what makes the biggest difference is high-quality teaching and the relationships teachers build with the children in their class. Children do best when they feel accepted for who they are and when teachers believe in what they can achieve.

What makes the school special to you?

I think the people – both adults and children – are amazing! We have a caring, committed and hugely talented staff and the children are so creative, interesting and friendly.

What are you having for lunch today?

I'm actually fond of the jacket potatoes from our school cafeteria. The wonderful kitchen staff look after me well!

Please tell us a little about Wolfie the dog who is part of the school and how he helps pupils, emotionally, socially or even academically?

Wolfie is basically our resident expert in staying calm – I'm not sure any of us are quite as relaxed as he is! He does enjoy the odd treat during the school day (sausages are a clear favourite), but mostly he's happiest just spending time with the children. He's very generous

with his special "Wolfie says Well Done" stickers for great work, and when someone's having a tricky day, he's always ready to listen – no interruptions, no judgement, just a waggy tail. He's also an excellent reading partner and is partial to a gentle stroll around the school field. And it would be wrong not to mention his wardrobe... Wolfie takes his role seriously, but he also likes to look the part, turning up in a range of very stylish coats for different occasions!

What piece of advice would you give a parent to support their children through primary school?

My first piece of advice is to enjoy this time. It really does go so quickly. Try to spend a bit of quality time with your child each day. It helps them feel secure and shows them they are being listened to (and if they don't want to talk about their school day, that's absolutely fine too).

It's also really important to have a good bedtime routine so your child is well-rested. Lack of sleep can affect their mood, behaviour and, most importantly, their ability to learn. Reading regularly makes a huge difference. Children who are read to, and who read with their parents, are much more likely to develop a love of books—and that has a lasting impact on their learning right through to GCSEs.

Finally, keep communication open with the school. If you have any worries, don't let them build up—teachers are always happy to talk things through and help.



Wolfie fast asleep after a busy day with all the children!



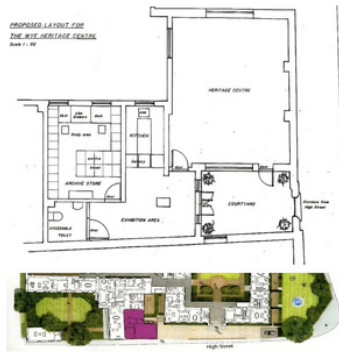
WYE HERITAGE MOVES

John Mansfield

Thanks to support from Telereal Trillium and in particular Damian Molony, we are very pleased to announce that our new Heritage Centre will be open in June.

The move from the historic but overflowing Latin School site has been planned for several years and refurbishment of the new premises is nearing completion. The removals will take us from the Latin School some 50 yards east to the site of the old students' common room with direct access from the High Street through a small courtyard. The new Centre is just to the West of the main College entrance.

The purpose-designed Centre comprises a spacious and adaptable entrance foyer, main exhibition room, small kitchen and servery, accessible toilet and space for storing the extensive archives of Wye and Wye



Above: the new site is shown in purple

College that have been built up over the last ten years. The new facilities will allow us even greater opportunities to present a showcase for the history of Wye. When the move has been made the Centre will continue to be open on market days as well as providing a new venue for talks and special events, so please drop in to see the exciting new development!

Wye Heritage was founded in 2009 to preserve and protect the history and heritage of Wye village and Wye College. www.wyeheritage.org.uk

CELEBRATION OF VOLUNTEERS TEA PARTY

This was held on Sunday 17th May and everyone enjoyed some tea and cake as a small reflection of our thanks for giving their time in Wye. David Martin, who started Our Place Wye 10 Years ago, came along to cut our birthday cake and share it around! Please get in contact if you can volunteer.



MARKING 10 YEARS OF OUR PLACE WYE

Jasper Bouverie, Chair

Ten years ago last month Our Place Wye was born with the aim of “nurturing a more inclusive and integrated community, more resilient and responsive to individual needs, age and social profile, thereby stimulating a healthy, caring and sustainable community in Wye and the surrounding area.”

A birthday is a good opportunity to take stock as to how we're doing. The company's five directors are pleased with many of our achievements: the fortnightly community lunch; this quarterly community newsletter that's distributed to every household in the community; the well-managed Facebook community group; the community garden; and, most recently the carers' support group that meets



once a month at Brambles Care Home. In addition to this, we are now running community events throughout the year - a celebration of volunteers in May, a community fair in September and the Christmas Street Party in December. We are delighted and grateful that many people in the village have helped out with all this. The lunch is served by volunteers. The newsletter delivered by volunteers. We have volunteer admin on the Facebook group. During the COVID pandemic, we coordinated a large number of volunteers. All of our management team and directors are volunteers. But we do still feel there is

room for improvement. We are aware that some people in the village perceive the lunch (and a lot of what we do) as 'for the older generation'. So we're keen to consult with the village's young people to find out what we might be able to do for them. (Watch this space.)

We'd also like to engage with more potential volunteers. We need help with a lot of what we're doing. And, like every voluntary organisation, we are also concerned about our funding model. Up to now, we've been grateful for support from the National Lottery, the Kent Community Foundation and the Parish Council. We are also very grateful for the sponsorship that we've received from local businesses. But we want to explore other methods of funding. (Again...watch this space!)

The purpose of this article is really to say Happy Birthday to Our Place Wye and thank you to everyone who has helped it happen. In the next edition, we'll present some new ideas that will hopefully help us to thrive even more. www.ourplacewye.org.uk.

WHERE HORROR COMES HOME

Local resident Thom Burgess tells us about his work as an award-winning writer and digital artist specialising in film, comics and games and his forthcoming Crash Festival



I grew up in Whitstable before moving to Wye several years ago. From an early age, I've always been drawn to horror and the supernatural, which led me into creative work across film, comics, games and animation as a designer, animator and writer. A few years ago, a co-writer in the US and I secured the film deal that became *Passenger*, Paramount's upcoming horror film. I've always loved stories connected to roads, folklore and the uncanny, so the project evolved very naturally from those interests. Local ghost stories such as the legend of Blue Bell Hill and The White Lady have stayed with me for years. Watching the film finally come to life, especially during a freezing shoot in Washington State last February, was an incredible experience and a world away from the North Downs.

Alongside my creative work, I occasionally lecture in creative disciplines and care deeply about helping people access the creative industries at a time when entry feels increasingly difficult. The collapse of Ashford Studios, combined with the lack of meaningful local support for screen arts, became the catalyst for launching Crash Festival, which I run with Will Hill. We debuted last summer at Ashford

Cinema with a simple aim. We wanted to create an event that felt welcoming, practical and accessible rather than elitist. Instead of gatekeeping the industry, we wanted to show emerging creatives real pathways into it through talks and conversations with people actively working across VFX, animation, games, design and comics.

One of the most rewarding parts of the festival was seeing students and aspiring artists speak directly with professionals whose work they admired on screen only months before. Following the success of Crash Festival, we're expanding into Canterbury this year for our main festival in August and doubling our capacity. We're also launching Crashworks, a gaming-focused event at Coachworks on June 21st, alongside developing Crash Studios CIC. The CIC will focus on supporting NEETs and people outside traditional education routes through game development and creative practice.

At a time when the UK government is investing heavily in gaming and screen arts, we believe it's more important than ever that those opportunities reach communities and young creatives who are too often overlooked.

- www.twburgess.com,
- www.manoghosts.com
- www.wearecrash.com

The UK faces a growing climate and nature emergency. Yet most people have never been fully briefed on what it means for our lives, our economy and our future. This new film from the National Emergency Briefing sets out the risks facing the nation - and the credible, positive responses available - in a clear and accessible account designed for screenings in communities across the UK.

We are grateful for the support of the following local business sponsors: Canterbury Cider, Meade Home Improvement, Sawyers, Sealey Cleaning, Spacemaker Architects, Ticketyboo, Tickled Trout, Musika, Wye Beauty, Wye Farmers' Market, Hobbs Parker, The Vault Hair and Beauty, Genesis Landscaping, Wye Coffee Shop, Not Just Travel, Smart Decluttering Services, The Bowl Inn Hastingleigh, The Hub and East Kent Flower Company. If you would like to become a sponsor please contact admin@ourplacewye.org.uk

Thanks to Our Place Wye funders:



EVENTS AND LISTINGS

Find out what's happening in Wye and surrounding areas over the coming months.

JUNE - SEPTEMBER

- 30 May, 4.15-5.30pm, People's Emergency Briefing Film, Small Village Hall, Wye
- 30 May, 6-7.30pm - Annual Parish Meeting, Small Village Hall
- 13 June, 10-2pm, Lady Joanna School Summer Fair
- 13 June, 1pm onwards, Boughton & Eastwell Cricket Club Summer Fayre.
- 13 June, Charity Music Festival, Tickled Trout
- 15 June, 7-7:30pm start, Wye Arts, Constant Lark Theatre Company 'Short' Shakespeare: Twelfth Night
- 20 June, Pilgrims Way Walking Challenge (Wye finish)
- 19-21 June, Stour Music first weekend, Boughton Aluph
- 27 June, Bodsham Summer Fair and Bake Off, 11.30-4pm, Bodsham Primary School.
- 27 June, 4-11pm, Brook Village BBQ, Village Hall, Live Music, BBQ, all welcome
- 26-28 June, Stour Music second weekend, Boughton Aluph
- 26-28 June, Wye Affordable Art Show, Wye Church
- 4 July, Organ recital, Wye Church
- 12 July, 10 - 2pm HandCrafted Community Market, Wye Village Hall
- 26 July, Charity Duck Race, Tickled Trout
- 19 Sept, Teddy Bear Extravaganza, Wye Church
- 20 Sept, Community Fair, Village Hall, Wye

OUR PLACE WYE CARERS' SUPPORT GROUP

Held at Brambles Care Home, this group is open to all unpaid family and friends who care for someone:

Tues 2 June - 11am - Tues 7 July -11am and Tues 4 August 11am

email: admin@ourplacewye.org.uk for more info

- Wye Farmers' Market will take place as usual on the first and third Saturdays of the month.
- The Options Club meet in Wye Church every Monday for board games, chat and coffee.
- Wye Community Choir meets every Tuesday, 7.30 pm in the small village hall.

EVENTS AT LUCKLEY HOUSE

Little Chequers, Wye, TN25 5DY

Open to all Wye Residents:

Mon 2-4pm - Knit and Natter

Tues 2-4pm - Darts and Board Games Group

Weds 10-11am - Coffee Morning

Weds 7-9pm - Bingo

Thurs 8:30 am - Breakfast Club

Sun 10-11 am - Coffee Morning

Contact [01233 812665](tel:01233812665) or drop in for further info

OUR PLACE WYE COMMUNITY LUNCH

Wye Village Hall, £5 for two courses, tea, coffee and biscuits. 12:15 for 12:30 serving. To book, message or ring: 07395433939. Please book 48 hours before the actual lunch.

Open to all Wye Residents:

June 10, 24

July 8, 22

Please note there are no lunches during August.

BROOK
OPEN GARDENS
SATURDAY 20th JUNE
2pm-5pm



AN INVITATION TO VISIT SOME VILLAGE GARDENS AND ENJOY TEA WITH FRIENDS, IN AID OF ST MARY'S CHURCH

TICKETS £8 (children free)

available from church on the day

and refreshments served all afternoon at church

1 ST MARY'S CHURCH

Tickets; tea & cake; eco guide in the churchyard; history guide in the church.

2 BROOK WOOD FARM

This is a working farm so visiting is by guided tour only, at 2.30pm & 4pm.

3 SANKEY FARM

4 THE OAST HOUSE

5 YEWE TREE HOUSE



Parking available at the Honest Miller and along The Street, please be considerate of driveways and narrow sections

WYE CRICKET CLUB

Tim Mitford Slade

Wye Cricket Club was founded in 1882 and has one of the most picturesque grounds in Kent, nestled at the foot of the Downs under the iconic Wye Crown. The Club sits at the very heart of the village off Cherry Garden Lane and over the last few years we have expanded the committee and grown from a club with three senior teams, to one that now includes over 160 children. Indeed, having started the Junior Section in 2013, we now offer cricket to boys and girls from 6 to 16, preparing our youngsters for Senior Cricket. Many of those first kids from 2013 are still involved, even our first XI Captain. We have six Junior teams playing in both the Ashford & District League and the Saxon Shore League, the latter with our Girls U13 team under the management of Dan Jones. We are extremely grateful to have so many volunteers, from ground staff, coaches, administrators and even our own scorer, Ivor Groves! We pride



Cricket season 2026 is now in full swing!

ourselves on being a true village cricket club – not getting above our station and involving everyone who wants to enjoy the game. Our social events, especially the Friday Night Social, have enabled us to properly connect with the village but we are always keen to do more. We couldn't have grown to where we are without key sponsors including Quinn Estates, The Tickled Trout, Telereal Trillium, Sawyers, Esquire Developments and Pentland Homes, and Wye Tennis Club!

If anyone wants to get involved in the club or just wants to pop down to watch a game and enjoy a cold drink from our bar, you are always most welcome.

contact: wyecricket@gmail.com

THE BODSHAM BAKE OFF!

Scales at the ready as we count down to the Bodsham Bake-Off! Held at the Bodsham School Summer Fair, this annual event has quickly become a local tradition since its debut in 2024, drawing in avid bakers near and far hoping to be crowned the Bodsham Bake-Off Champion. With two categories and prizes for each, adults and 12 years and under, the bake-off is open to anyone and everyone, regardless of baking prowess. Entrants need to submit their bakes by 12 pm, ahead of judging at 12.45 pm by the lovely local WI, who undoubtedly know a thing or two about a good bake!

The Bodsham Summer Fair is held on Saturday 27th June from 11.30 am to 4 pm at Bodsham School, School Hill, TN25 5JQ.



COMMUNITY GARDEN, BLOOMING GREAT!

After a long, wet and relatively mild winter, spring has finally arrived, along with a cold unfriendly north east wind. This relaxed for a week or so, but is back with a vengeance. The ground is dry and hard to work. If anyone knows the rain dance, now's the time! The herb bed is doing well, and has a healthy collection including rosemary, sage, mint, thyme, parsley and chives. The mint is planted in semi-buried pots, to control its roots and prevent the herb garden becoming a mint garden. Please help yourself to whatever herb(s) will best flavour your cooking. We have planted lettuces and a few other salad crops; runner beans are going in soon. We cleared three of the strawberry beds and dug in plenty



of compost, before re-planting the healthiest of the removed plants. We hope this produces a better crop of fruit. (Please see previous comments about the need for rain.)

The Garden is for EVERYONE. It's a particular joy to see children call in on the way home from school, hunting for strawberries. If you don't already know, the Garden is opposite the Fire Station, and next to the dentist. Do pay a visit – there are benches and other seating, to encourage you to pause a while.

VILLAGE HALL SOLAR PROJECT A SUCCESS!

David Reece, Wye Village Hall project leader

If you have recently used the Village Hall and failed to spot the new solar panels, that's because they blend in so well! There are 62 large panels, plus three huge batteries that are especially useful as there is a lot of evening activity, including floodlighting for the Tennis Club and MUGA. We have achieved far more than our early target, thanks to generous donations (recognised on a plaque at the Hall) including a big grant from Ashford Borough Council's environmental fund.

When we are licensed to sell back surplus power to the grid, the indications are that over the year we will be broadly self-sufficient. That will allow us to keep down charges for hall users, so we will all benefit. And we will save six tonnes of CO2 emissions a year. It's a win-win-win!

WYE RESIDENT TAKES ON THREE PEAKS CHALLENGE IN AID OF ROYAL MARSDEN

Janet Du Chenne

One of our own, Doug Anderson, is preparing to take on an extraordinary challenge in June as he attempts the UK's Three Peaks in just 24 hours - Ben Nevis, Scafell Pike and Snowdon - to raise money for the Royal Marsden Cancer Charity.

Doug has already climbed Ben Nevis a couple of times, as well as completing the West Highland Way, but this latest challenge promises to be the ultimate feat – a real hat-trick of the UK's highest

peaks in a single day. He's no stranger to putting in the miles either. A few climbs up and down the Wye Crown, along with walks on the North Downs Way, have provided a "gentle" training ground for the steep ascents ahead.

Doug and his family have lived in Wye since 2014, and the challenge is especially close to his heart because of the care his family received from the Royal Marsden Hospital. His son Josh was diagnosed with aplastic anaemia, a serious bone marrow failure condition, in 2017 and underwent a bone marrow transplant in 2018, with his sister Grace as donor.

Josh is himself thriving now, having hiked Snowdon in 2024 and Ben Nevis in 2025 with the family, and is in Year 8 at school. Doug says he will always be grateful to the

doctors, nurses, play specialists and everyone else at the Royal Marsden for their care and kindness. If you'd like to support Doug's fundraiser, donations can be made here:

<https://www.justgiving.com/page/doug-anderson>

One of life's important lessons is about giving back, and this challenge is Doug's way of saying thank you.



Doug and his family at the top of Ben Nevis!

A CUPPA WITH... Steve Bloom, photographer and writer

What brought you to this area?

My wife Kathy and our two sons Dan and Adam came here from North London in 1998. I had recently sold my share of a special-effects studio in London's Soho and had become a full-time freelance wildlife photographer. The invention of the Internet meant that I did not have to be confined to the city anymore. After a two year search we found our house in Wye.

What inspired you to become a photographer and writer?

I come from a highly creative family and was always driven to make a living out of the arts. I don't think I could have done anything else.

Do you have a favourite subject to photograph?

It has to be what I'm photographing at the time the photograph is taken. It's important to be totally immersed in the subject while photographing it. Looking back historically though, the most exhilarating was photographing



Above: An elephant swimming in the Andaman Sea an elephant swimming underwater in the Andaman Sea in India. I made three trips to the region and pushed myself relentlessly until I was happy with the results. I enjoy photographing elephants.

What's the key to creating a good photograph?

Don't think you can shoot hundreds of images and edit later. In the days of analogue film the costs of film and processing were very high, so photographers were forced to consider every aspect of a photograph before pressing the shutter. It's a discipline that must be maintained nowadays, for good photography, in this age when billions of pictures are made every day.

Who has influenced your style?

A number of artists: Picasso, Hockney,

Irving Penn to name a few. I look intensely at the work of others and visit exhibitions a lot. They inspire me to search for my own way of seeing.

What's been your proudest achievement?

Fifteen books in twenty-two languages and seventeen large scale city centre outdoor exhibitions across Europe. With the first book I remember seeing the printer's factory fill with books and listening to the thumping of the press and thinking that my dream of publishing a book had come true. Every artist needs their work to be seen, and I am honoured to have had that privilege.

What would your last meal be?

The longest ever three-Michelin-star meal spread over decades.



Above: Siberian tigers fighting in the snow in Northern China

To learn more about Steve's work visit:

www.stevebloomphoto.com

COMMUNITY CORNER

Capturing local sights, special moments and the charm of our village in pictures from the Our Place Wye Facebook Page:



Above: Wye Walkers visiting the Devil's Kneading Trough on one of their Sunday walks



Left: Wye Arts were captivated by Etienne Pradier, the Magician in March at the Village Hall



Below: Sharon Crux found an old newspaper from March 1983 when Wye welcomed Princess Anne



Left: Steph Tappenden spots a heron watching over the village



Above: Chris Razzell capturing the beautiful bluebells in Kings Wood



Above: Adrian Stead shares this photo across the fields

WHAT MAKES WYE WYE: ST GREGORY AND ST MARTIN CHURCH

Reverend Ravi Holy

Wye church is literally unique in that, as far as we know, it is the only church dedicated to St Gregory & St Martin in the world.

Gregory the Great was the sixth century Pope who sent Augustine (who became the first Archbishop of Canterbury) to convert the pagan Britons to Christianity. Gregory was, thus, known as the Apostle to the English and our church was originally dedicated to him alone. However, after the establishment of the College of St Gregory and St Martin in 1447 (Martin of Tours being the patron saint of soldiers) the church's name was changed to match this.

The architecture of the church may also be unique. This is because the tower collapsed one day in 1686 – fortunately nobody was hurt – and when it was



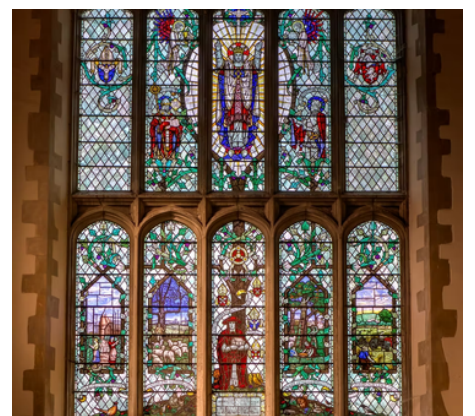
Above: The Church surrounded by daffodils

rebuilt, it was rebuilt in the style of the time. The east end of the restored building looks like a church you would normally only find in London or another city yet here it is in a small Kent village, bolted onto the end of a classic medieval church.

The church is unusually and gloriously light as a result of having, effectively, two sets of windows, most of which are clear glass with the exception of the post-war stained glass above the west door which contains scenes of agricultural life including the hops for which Wye was previously renowned.

In recent years, we have removed the old, Victorian pews and replaced them with beautiful, movable ones to create a more flexible space. It is important to understand that a church is always a work in progress, constantly adapting to suit the needs of an ever-changing world even if the essential message of God's transforming love for all humanity remains the same.

With your support, Wye church can remain a place in which people can encounter God and mark the significant moments in their life for many years to come.



Above: The beautiful stained glass window